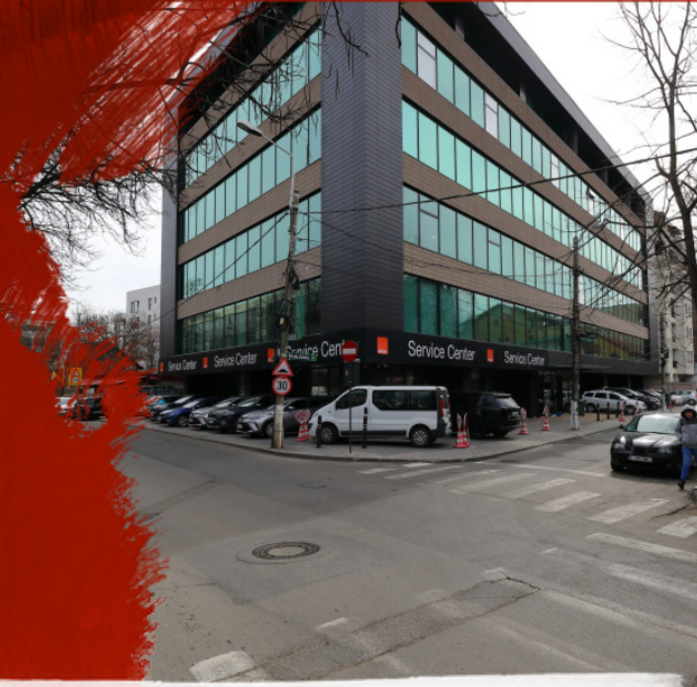


Office to let

Biharia Office Building

Bucharest, Sector 1, 26 Biharia Street



Building information

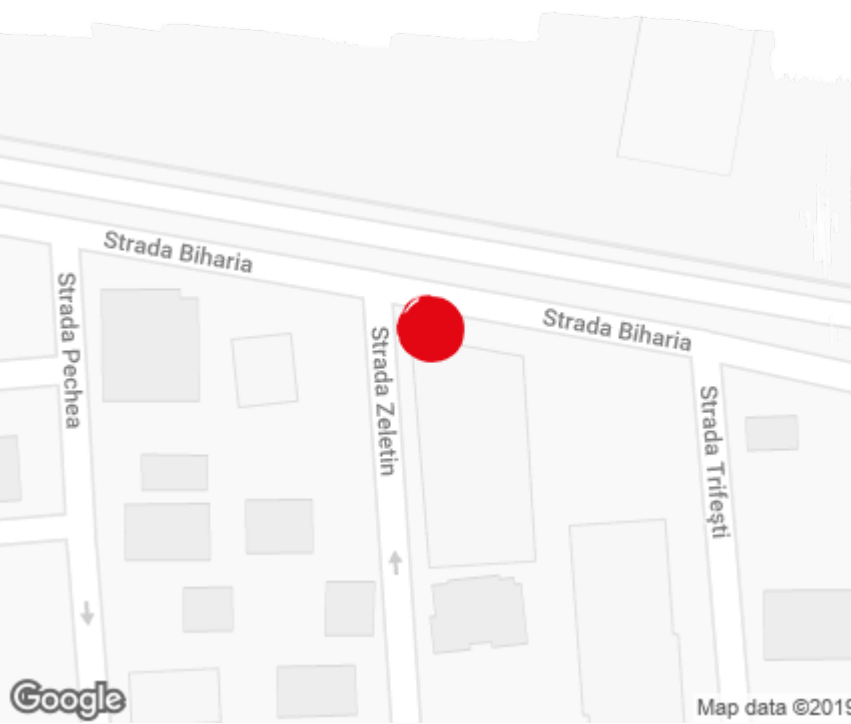
Building status	Existing
Year of construction	2007
Parking ratio	1 / 97 sq m
Total building area	7 804 sq m

Commercial terms

Office space*	after login *
Parking	after login *
Service charge*	after login *
Minimum lease term	after login *
Availability	after login *

* Asking terms for m²/month



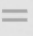










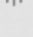
Location



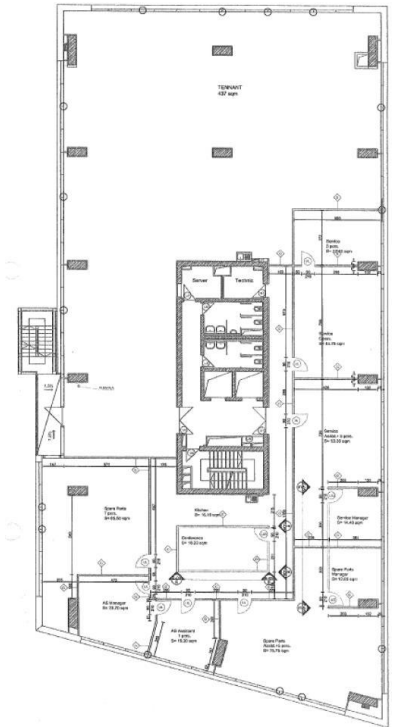
Available space

Building completely leased

Standard fit-Out

- | | | | |
|--|-------------------|---|------------------|
|  | Air conditioning |  | Reception |
|  | Raised floor |  | Security |
|  | Suspended ceiling |  | Fibre optics |
|  | Telephone cabling |  | Switchboard |
|  | Computer cabling |  | Openable windows |
|  | Power cabling |  | Elevators |
|  | Smoke detectors | | |
|  | Wall partitioning | | |

Typical floor plan



Public transport

Bus: 112, 301,605

Tram: 5

Contact



+40 21 302 3400

More information